



Apartment 9, St Illtyds Court  
Llantwit Major, CF61 1UG



Watts  
& Morgan

# Apartment 9 St Illtyds Court

Llantwit Major CF61 1UG

£995 PCM

2 Bedrooms | 2 Bathrooms | 1 Reception Rooms

One of the largest apartments in this exclusive development, Apartment 9 is located on the first floor, the apartment offers spacious living areas and pleasant, southerly views. The carefully designed accommodation briefly comprises of an entrance hall with useful integral storage, open plan kitchen, dining room and living room, master bedroom with en-suite, second double bedroom and a family bathroom. Designated off road parking. EPC Rating - C Council Tax Band - F

## SITUATION

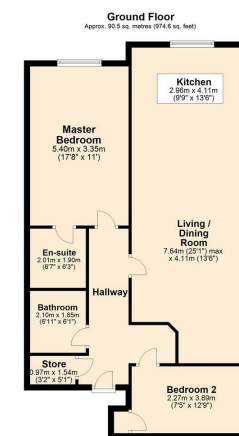
The town of Llantwit Major is situated near the western edge of the Vale and offers a good range of shops – including two supermarkets, a 13th century Church, primary and secondary schools, a swimming pool and other leisure facilities. The town is by passed along the route from Bridgend to Barry and is also within convenient driving distance of the M4 inter-change at Pencoed and the City of Cardiff. The heritage coast, which is known for its cliff top walks, bathing and surfing beaches, lies to the south and west of the town. Cardiff (Wales) Airport at Rhoose is approximately five miles away. There is a "park and ride" railway station at Llantwit Major, which provides a regular service to Cardiff city centre and to Bridgend.

## OUTSIDE

The apartment is set within attractive, landscaped grounds. There is designated parking for Apartment 9 and a number of visitor spaces.

## DIRECTIONS

Situated in the heart of the historic town of Llantwit Major, a superb central town location within easy, level walking distance of amenities and the railway station. St Illtyds Court lies just 5 miles from Cowbridge, 16 miles from M4 (J33) and 19 miles from Cardiff City Centre. Regular rail and bus services from Llantwit Major to Bridgend, Cardiff, Swansea, Bristol, London Paddington, and other major UK cities means you can relax and let others get you wherever you need to go. Cardiff International Airport is just 20 minutes away by road and provides scheduled domestic, European and International passenger flights.



Total area: approx. 90.5 sq. metres (974.6 sq. feet)  
Plan produced by Watts & Morgan LLP.  
Plan produced using PlanIt.

9 St. Illtyds, Vale of Glamorgan, Llantwit Major

